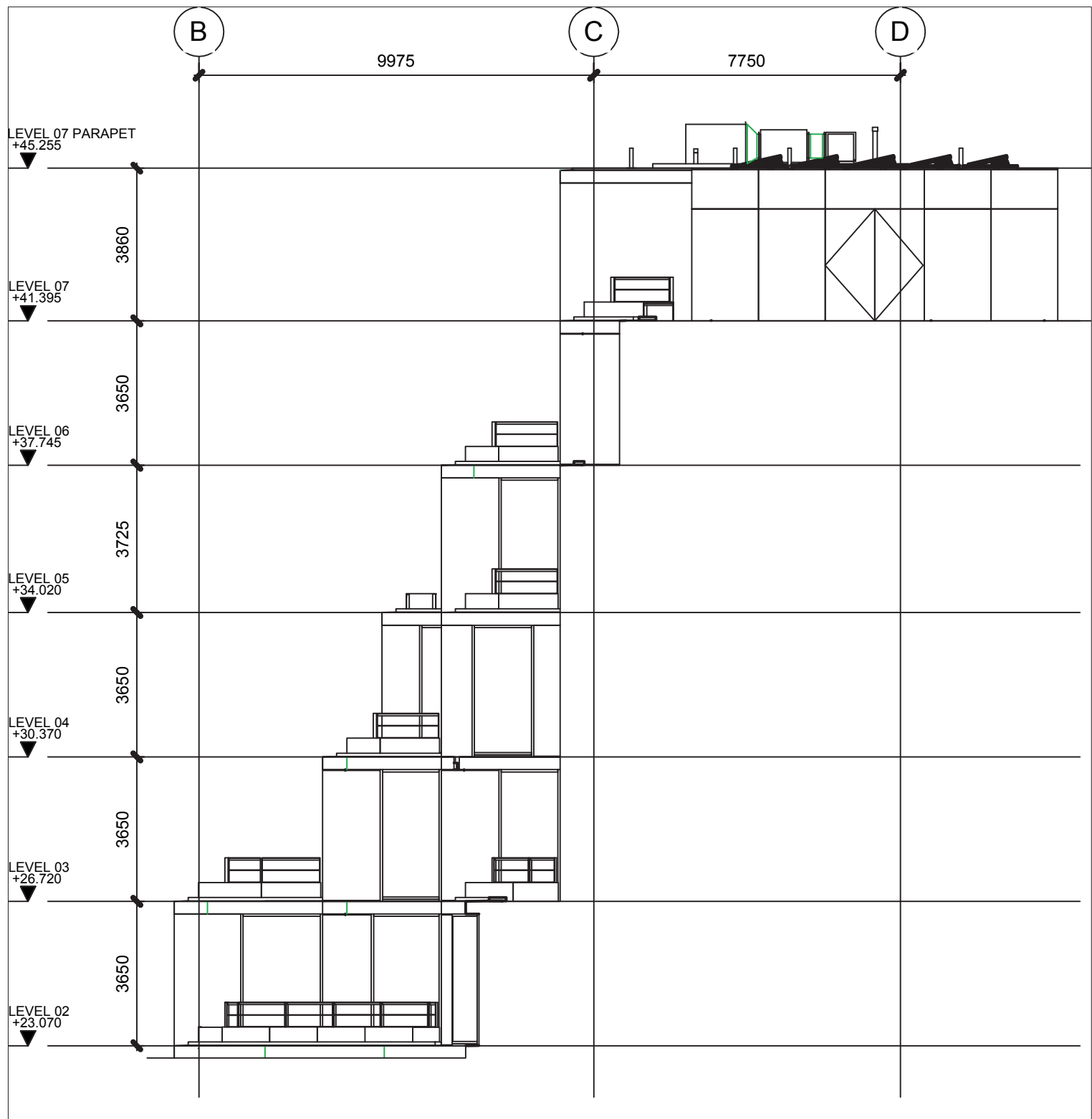


1 RAY STREET ELEVATION

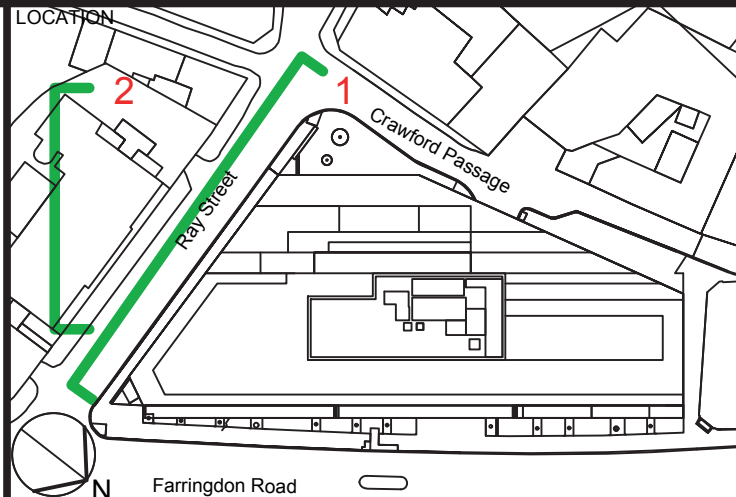


2 RAY STREET - ORTHOGONAL ELEVATION

KEY  
NOTE:  
GROUND LINE INDICATIVELY SHOWN REFER TO LANDSCAPE ARCHITECTS DRAWINGS FOR INFORMATION  
REFER TO (Z1) SERIES BAY STUDIES FOR BRICK BOND VARIATION CLARIFICATION  
PVS TO ROOF LEVEL NOT SHOWN FOR CLARITY

REV DATE DESCRIPTION  
RD 1 23.01.19 FINAL RECORD

NOTE  
1. Do not scale from this drawing.  
2. All dimensions to be checked on site by the contractor and such dimensions to be his responsibility.  
3. Report all drawing errors, omissions and discrepancies to the architect.  
4. This document may be issued in an uncontrolled CAD format to enable others to use it as background information to make alterations and/or additions. In that instance the file will be accompanied by a PDF version. It is for those making such alterations and additions to ensure that they make use of current background information. AHMM Ltd accepts no liability for any such alterations or additions to the background information or arising out of changes to background information which occur prior to alterations or additions being made.  
5. This drawing is the last revision issued for construction under the building contract dated 23.06.2016. This drawing has not been verified by site survey and construction tolerances may have resulted in differences between this drawing and the finished building.



ALLFORD HALL MONAGHAN MORRIS						
ARCHITECTS LTD MORELANDS, 5-23 OLD STREET LONDON EC1V 9HL TEL 020 7251 5261 FAX 020 7251 5123 WEB WWW.AHMM.CO.UK						
job title						
119 FARRINGDON ROAD						
drawing title / location						
SOUTH ELEVATION RAY STREET						
drawn by	checked	scale	status			
SN	PR	1 : 125@A1 ; 1:250@A3	FINAL RECORD			
project	zone	source	classification	drawing no.	revision	
12164	-	A	(00)_203	RD 1		